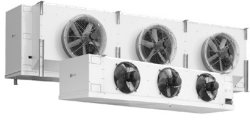




Industrial air coolers TYR

Standard coolers with stainless steel tubing

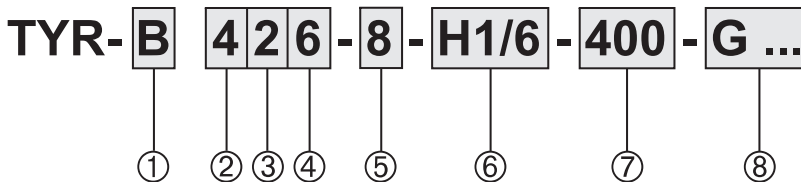




Contents

	page
Model indication.....	2
Eurovent	2
Capacities	2
General information	3
Standard product configuration	3
Non Standard executions	4
Correction factors & Selection example	5
 Capacities & Technical data	
Fan data	15
Defrost systems	16
Technical data electric defrost	17
Dimensions	20

Model indication



Pos.	Reference	Options
1	Air direction	B = Blow through Z = Draw through
2	Cooler module	1 - 7
3	Number of fans	1 - 7
4	Tube rows	4, 6 or 8 tube rows
5	Fin spacing	4, 6, 7, 8, 10 or 12 mm
6	Circuiting design	2H, H1, H2 ...
7	Current	400 = 230/400/50/3 230 = 230/50/1
8	Options	For a full survey of all available options see page 4

Eurovent

Within Europe, a wide variety of published data on capacities are in use, generally depending on national standards. Most in use by the leading manufacturers are national and international standards like DIN, ENV, NEN-EN and ASHRAE. Due to this, customers have not been able to make objective product comparisons, since data published on capacities were based on DT₁, DTM, dry or wet conditions, with or without certification, etc.



To meet the European requirements on EN standards, the European Refrigeration Industry embodied by Eurovent has set standards to guarantee an independent certification procedure for forced convection air cooled condensers based on NEN-EN 327 and unit air coolers based on NEN-EN 328. Being an active member of Eurovent, the capacities of the Alfa Laval commercial cooler programme, as given in the technical documentation, are based on NEN-EN 328 (*evaporating temperature t₀ = - 8 °C, 8 K temperature difference between air-on temperature and evaporating temperature (DT₁)*).

In order to enable air cooler selection for operating conditions, technical documentation should also give capacities for humid/frosted conditions. According to Eurovent these 'frosted conditions' are to be calculated by multiplying 'dry capacities' with a factor 1.15. These data can be found in the capacity tables, in the columns marked "frosted".

Capacities

Frosted conditions

- Lightly frosted coil.
- Relative humidity 85 %.
- Suction gas superheating 62% of the temperature difference (DT₁), with a minimum of 3.5 K.
- Refrigerant liquid temperature 30 °C (for t₀ = - 20 °C and below: liquid temperature 10 °C).

Evaporating temperature t₀

Evaporating temperature t₀ is the saturated temperature according to the pressure at the suction outlet of the cooler.

Dry conditions

Cooling capacity where no condensation or ice build-up occurs on the coil (100% sensible cooling). This condition is used by Eurovent to standardise capacity ratings but should not be used when selecting coolers.

For cooler selection use the columns marked "frosted".



General Information

The TYR series is a wide and flexible range of industrial air coolers fitted with blow-through or draw-through fans.

Application area: evaporating temperatures of +5 down to -40 °C using either ammonia (R-717), halogen refrigerants, CO₂, or secondary refrigerants.

Capacities (Eurovent SC 2) 5 up to 116 kW.

Air flow 4000 up to 68100 m³/h.

These models have been highly standardised in construction and dimensions, while maintaining flexibility in fin spacings, coil construction and circuiting design.

Other TYR models

TYR-D

Low silhouette dual discharge air coolers.

TYR-F

Air cooler models TYR-F have been optimized for the refrigerated storage of agricultural products. These cooler models are characterised by an optimised capacity / air volume ratio and a relatively low profile.

TYR-A

For airsock application Alfa Laval has developed a special airsock cooler range. These TYR-A models are fitted with an airsock ring and fan motors capable of supplying the extra external pressure that is required for the proper functioning of airsocks.

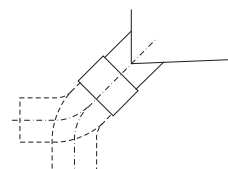
All TYR, TYR-D, TYR-F and TYR-A models are also available with copper tubing (THOR range).

Two-Year Guarantee

Because Alfa Laval has the fullest confidence in the product quality, a two-year full guarantee is given.

Product Configuration

- Finned coil
 - 7 coil block modules
 - 4, 6 or 8 tube rows deep
 - Stainless steel tubing Ø 16 mm
 - Tube pitch 50 x 50 mm square
 - Corrugated Alu-fins
 - Fin spacings 4, 6, 7, 8, 10 and 12 mm.
- 1-7 Fans, blowing or drawing through the coil, available in a range of different executions. Diameters Ø 406 mm up to Ø 710 mm. Fan motors protection class IP55.
- Corrosion resistant casing material: Aluminium/Sendzimir, white epoxy coated (RAL 9003).
- Hinged, enclosed end covers (modules 1 - 4). Larger modules fitted with easily removable end covers.
- Hinged driptray.
 - Drain(s) 32 mm
 - PVC connection, freely adjustable into either horizontal or vertical position.
- Refrigerant distribution optimised to refrigerant applied.
- Refrigerant connections on right hand side (fan side view).
- Fitted with schröder valve on the suction connection for testing purposes (not for R-717).
- Sufficient room for fitting the expansion valve inside.
- Suitable for dry expansion or pumped system. DX-coolers for halogen refrigerants are fitted with Cu-distributor.
- Stickers indicate fan direction and refrigerant in/out.
- Delivery in mounting position. Coolers are mounted on wooden beams. Installation can take place with use of a forklift.
- Design pressure 33 bar (H(C)FC), 27 bar (ammonia) or 6 bar (brine). Higher design pressures on request. Each heat exchanger is leak tested with dry air and finally supplied with a nitrogen pre-charge.





Options

Defrost systems

- Hot gas coil in driptray
- Electric defrost
- Hot glycol defrost
- Water defrost

Electric defrost for air coolers with pumped refrigerant circulation or in glycol execution on special request only.

G1, G2
E1, E2, E4, E5
HW1, HW2
W

Non-standard executions *(on request only)*
Special fan motors :

- Dual fan speed motors
- Variable fan speed motors
- EC fans
- Alternative electrical supply 460/60/3
- Fans for extra external pressure 125 Pa

P

Built in heater coil sections
Fan ring heater

FRH

Driptray insulation

- Styropore 10 mm + cladding
- Foamglass 25 mm + cladding

I 2

I 3

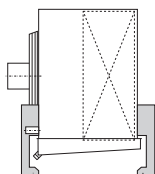
Refrigerant connections left
(fan side view)

L


Mounting feet

MF

For floor mounting, TYR coolers can be equipped with hot dip galvanized steel mounting feet. The positioning of these is the same as the suspension brackets for ceiling mounting.

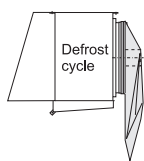
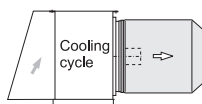

Isolating switch (mounted)

ISM

Shut up® system

S + SH

for TYR-Z only. The system comprises a shut up sock (S) and an inlet hood (SH) to enhance defrost efficiency.

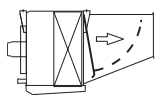


The use of a shut-up® system may lead to a decline in cooling capacity up to max. 5 percent. Please take this into account during selection. When working conditions are such that condensation would freeze during the derosting period, the inlet hood should be insulated.

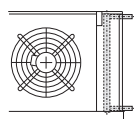
Diffuser + defrost damper

D/DO

Discharge diffuser to increase air throw (D), can also be fitted with a defrost damper valve (O) that closes automatically when the fans are stopped. TYR-B only.


Secondary refrigerant

Air coolers for secondary refrigerant application can be selected with our selection software. Extra information on request.


Stainless steel 304 casing

SSC

Fan motors 400/60/3 or 230/60/1

Driptray Insulation (I)

For specific operational conditions TYR coolers can be fitted with driptray insulation.

Insulation of the driptray is recommended for air coolers with hot gas defrosting used at a room temperature below - 5 °C. For areas with high relative humidity it may also be necessary to insulate other parts of the casing. At extra cost this

Fan Ring Heater (FRH, 230 Volt)

incl. mounting gear

Cooler module	Fan diameter mm	Ring heater power W
1	406	400
2	457	450
3	508	500
4	560	500
5	560	500
6	630	325
7	710	350

driptray insulation can be combined with the usual epoxy coating.

Note : When selecting driptray insulation the overall height "B" of the coolers (see page 20 and 22) increases by the thickness of the insulation material applied.

Selection Example DT₁

Refrigerant	R 404A dx
Selected fin spacing	7 mm
Required cooling capacity	23 kW
Air-on temperature	+2 °C
Evaporating temperature	-5 °C

- 1) $DT_1 = +2 - (-5) = 7 \text{ K}$
- 2) Correction factor $DT_1 / R 404A : 1.15$
- 3) Multiply required capacity
with correction factor : $23 \times 1.15 = 26.5 \text{ kW}$.
- 4) Cooler models can be selected in columns 'capacity / frosted' on pages 9 and 10 with a nominal capacity of 26.5 kW.

For the above mentioned conditions the following TYR models can be selected :

- TYR 238-7, nom. cap. 27.1 kW.
- TYR 254-7, nom. cap. 26.8 kW.
- TYR 336-7, nom. cap. 29.5 kW.
- TYR 344-7, nom. cap. 28.6 kW.
- TYR 434-7, nom. cap. 26.8 kW.

Depending on parameters such as *air flow*, *number of fans* and *cooler dimensions* (see tables) a final cooler model selection can take place.

Capacity values under 'Dry Conditions' are reference values for Eurovent conditions.

Standard condition SC	Air on temp. °C	Evaporating temperature °C	Factor dry frosted
SC1	10	0	1.35
SC2	0	-8	1.15
SC3	-18	-25	1.05
SC4	-25	-31	1.01

SC 2 : Nominal capacity for cooling design.

Air-on temperature is the air temperature at the intake side of the coil block.

Correction factors

DT1 K	Evaporating temperature °C									
	+5	0	-5	-8	-10	-15	-20	-25	-30	-35
R-404A dx										
6	1.28	1.32	1.38		1.44	1.51	1.58	1.64	1.69	1.72
7	1.06	1.10	1.15		1.20	1.27	1.33	1.39	1.44	1.48
8	0.89	0.93	0.97	1.00	1.03	1.09	1.15	1.21	1.26	1.29
9	0.77	0.80	0.84		0.89	0.95	1.00	1.06	1.11	1.15
10	0.67	0.70	0.74		0.78	0.83	0.89	0.95	1.00	1.04
11	0.59	0.62	0.65		0.70	0.74	0.80	0.85	0.90	0.94
R-134a dx										
6	1.34	1.42	1.50		1.60	1.71	1.82	1.94		
7	1.11	1.17	1.25		1.34	1.43	1.54	1.64		
8	0.94	0.99	1.06		1.14	1.23	1.32	1.42		
9	0.81	0.86	0.92		0.99	1.07	1.16	1.25		
10	0.70	0.75	0.80		0.87	0.94	1.03	1.11		
11	0.62	0.66	0.71		0.77	0.84	0.92	1.00		
R-22 dx										
6	1.34	1.39	1.45		1.52	1.59	1.66	1.73	1.78	1.81
7	1.11	1.15	1.21		1.27	1.33	1.40	1.47	1.52	1.55
8	0.94	0.98	1.03		1.08	1.14	1.21	1.27	1.32	1.36
9	0.81	0.84	0.89		0.94	1.00	1.06	1.12	1.17	1.21
10	0.70	0.74	0.78		0.82	0.88	0.94	1.00	1.05	1.09
11	0.62	0.65	0.69		0.73	0.78	0.84	0.90	0.95	0.99
R-404A pumped system										
6	1.00	1.07	1.13		1.19	1.24	1.29	1.34	1.39	1.44
7	0.82	0.88	0.94		1.00	1.05	1.10	1.15	1.20	1.25
8	0.70	0.75	0.80		0.85	0.90	0.95	1.00	1.05	1.11
9	0.60	0.65	0.69		0.74	0.79	0.84	0.89	0.94	1.00
10	0.52	0.56	0.61		0.65	0.70	0.75	0.80	0.85	0.91
11	0.46	0.50	0.54		0.58	0.62	0.67	0.72	0.78	0.84
R-22 pumped system										
6	1.13	1.21	1.28		1.34	1.39	1.44	1.48	1.53	1.58
7	0.92	0.98	1.05		1.10	1.16	1.21	1.25	1.30	1.36
8	0.76	0.82	0.88		0.93	0.98	1.03	1.08	1.14	1.20
9	0.64	0.70	0.75		0.80	0.85	0.90	0.95	1.01	1.07
10	0.55	0.60	0.65		0.70	0.74	0.79	0.84	0.90	0.97
11	0.48	0.52	0.57		0.61	0.66	0.71	0.76	0.82	0.89
R-717 pumped system (ammonia)										
6	0.96	1.03	1.09	1.12	1.14	1.19	1.22	1.24	1.26	1.26
7	0.79	0.84	0.90	0.93	0.95	0.99	1.02	1.05	1.06	1.07
8	0.66	0.71	0.76	0.78	0.80	0.84	0.87	0.90	0.92	0.93
9	0.56	0.61	0.65	0.67	0.69	0.73	0.76	0.78	0.80	0.82
10	0.49	0.53	0.57	0.59	0.60	0.64	0.67	0.69	0.71	0.73
11	0.43	0.46	0.50	0.52	0.53	0.56	0.59	0.62	0.64	0.66

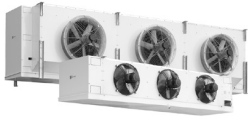
Correction factors for other refrigerants, alternative fin materials, coatings and optional coil block configurations on request.

Capacities R-404A

Fin spacing 7 mm

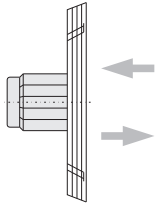
Cooler model TYR	Capacities kW		Air flow m ³ /h	Coil Surface m ²	Int. vol. dm ³	Weight kg	Dimensions		Fans		Air throw (m)		Sound press. dB(A)
	Frosted $t_0=-8^{\circ}\text{C}$ $DT_1=8\text{K}$	Dry cond. $t_0=-8^{\circ}\text{C}$ $DT_1=8\text{K}$					Length A mm	Height B mm	Cap. kW	Nr	TYR-B	TYR-Z	
116 - 7	6.2	5.3	4280	33.8	11	72	1320	580	0.25	1	20	24	57
118 - 7	7.5	6.5	4230	45.1	14	81	1320	580	0.25	1	20	24	57
126 - 7	12.3	10.7	8560	67.6	21	116	2120	580	0.25	2	20	24	60
128 - 7	15.1	13.1	8460	90.1	28	132	2120	580	0.25	2	20	24	60
136 - 7	18.5	16.0	12840	101.4	32	159	2920	580	0.25	3	20	24	62
138 - 7	22.6	19.6	12700	135.2	42	183	2920	580	0.25	3	20	24	62
146 - 7	24.6	21.4	17130	135.2	42	203	3720	580	0.25	4	20	24	63
148 - 7	30.1	26.2	16930	180.3	56	234	3720	580	0.25	4	20	24	63
156 - 7	30.8	26.7	21410	169.0	53	246	4520	580	0.25	5	20	24	64
158 - 7	37.6	32.7	21170	225.3	70	285	4520	580	0.25	5	20	24	64
166 - 7	36.9	32.1	25690	202.8	63	290	5320	580	0.25	6	20	24	65
168 - 7	45.2	39.3	25400	270.4	84	336	5320	580	0.25	6	20	24	65
176 - 7	43.1	37.4	29970	236.6	74	333	6120	580	0.25	7	20	24	66
178 - 7	52.7	45.8	29630	315.5	99	388	6120	580	0.25	7	20	24	66
214 - 7	5.4	4.7	5190	27.0	12	69	1320	680	0.25	1	24	29	60
216 - 7	7.4	6.4	5150	40.6	19	78	1320	680	0.25	1	24	29	60
218 - 7	9.0	7.9	5070	54.1	25	88	1320	680	0.25	1	24	29	61
224 - 7	10.7	9.3	10400	54.1	20	108	2120	680	0.25	2	24	29	63
226 - 7	14.8	12.8	10300	81.1	30	127	2120	680	0.25	2	24	29	63
228 - 7	18.1	15.7	10100	108.2	40	147	2120	680	0.25	2	24	29	64
234 - 7	16.1	14.0	15600	81.1	28	147	2920	680	0.25	3	24	29	65
236 - 7	22.1	19.3	15410	121.7	42	176	2920	680	0.25	3	24	29	65
238 - 7	27.1	23.6	15200	162.2	56	205	2920	680	0.25	3	24	29	65
244 - 7	21.4	18.6	20700	108.2	36	187	3720	680	0.25	4	24	29	66
246 - 7	29.5	25.7	20550	162.2	53	225	3720	680	0.25	4	24	29	66
248 - 7	36.1	31.4	20300	216.2	71	264	3720	680	0.25	4	24	29	67
254 - 7	26.8	23.3	25900	135.2	43	226	4520	680	0.25	5	24	29	67
256 - 7	36.9	32.1	25690	202.8	65	274	4520	680	0.25	5	24	29	67
258 - 7	45.2	39.3	25400	270.4	86	322	4520	680	0.25	5	24	29	68
264 - 7	32.1	27.9	31100	162.2	51	265	5320	680	0.25	6	24	29	68
266 - 7	44.3	38.5	30830	243.4	76	323	5320	680	0.25	6	24	29	68
268 - 7	54.2	47.1	30400	324.5	102	381	5320	680	0.25	6	24	29	68
274 - 7	37.5	32.6	36300	189.3	59	305	6120	680	0.25	7	24	29	69
276 - 7	51.7	44.9	35970	283.9	88	372	6120	680	0.25	7	24	29	69
278 - 7	63.2	55.0	35500	378.5	117	440	6120	680	0.25	7	24	29	69
314 - 7	7.1	6.2	6920	36.1	17	88	1320	880	0.37	1	27	33	62
316 - 7	9.8	8.6	6870	54.1	25	101	1320	880	0.37	1	26	32	62
318 - 7	12.0	10.5	6770	72.1	33	114	1320	880	0.55	1	26	32	62
324 - 7	14.3	12.4	13800	72.1	27	142	2120	880	0.37	2	27	33	65
326 - 7	19.7	17.1	13700	108.2	40	168	2120	880	0.37	2	26	32	65
328 - 7	24.1	20.9	13500	144.2	54	194	2120	880	0.55	2	26	32	65
334 - 7	21.4	18.6	20800	108.2	37	196	2920	880	0.37	3	27	33	67
336 - 7	29.5	25.7	20600	162.2	56	234	2920	880	0.37	3	26	32	67
338 - 7	36.1	31.4	20300	216.3	74	273	2920	880	0.55	3	26	32	67
344 - 7	28.6	24.8	27700	144.2	47	250	3720	880	0.37	4	27	33	68
346 - 7	39.4	34.2	27500	216.3	71	301	3720	880	0.37	4	26	32	68
348 - 7	48.2	41.9	27100	288.4	95	352	3720	880	0.55	4	26	32	68
354 - 7	35.7	31.0	34600	180.3	58	303	4520	880	0.37	5	27	33	69
356 - 7	49.2	42.8	34300	270.4	86	367	4520	880	0.37	5	26	32	69
358 - 7	60.2	52.4	33800	360.5	115	431	4520	880	0.55	5	26	32	69
364 - 7	42.8	37.2	41500	216.3	68	357	5320	880	0.37	6	27	33	70
366 - 7	59.1	51.4	41200	324.5	102	434	5320	880	0.37	6	26	32	70
368 - 7	72.2	62.8	40600	432.6	136	511	5320	880	0.55	6	26	32	70

Changes possible without prior notice



Fans

In view of its flexible construction, in principle TYR can be supplied with any desired fan. Depending on the application there is a standard series of fans which match TYR perfectly. These fans can be supplied in both blow-through and draw-through versions.

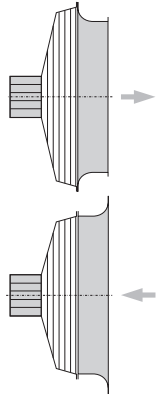


Execution

The fans are fitted with balanced aluminium or polyamide fan blades. Plate fans are fitted with robust electrolytically galvanized and epoxy coated fan guards according to DIN 31001 and are mounted in vibration dampers. Short case fans are fitted with stainless steel fan guards.

Enclosed design spray-tight motors, protection class IP-55.

All motors, with the exception of the 0.37 kW, 230/50/1 motor, are equipped with a thermal safety device built in the windings, connected to separate terminals in the box. This safety device can therefore be integrated into the control circuit. The electrical control should be arranged preferably with a manual reset device in order to prevent continuous on/off switching (tripping) of the motors. Cable inlet ranges from 7 up to 12 mm.



Air throw

Air throws as given in the tables are for ceiling mounted coolers at $t = 20\text{ °C}$, an unrestrained air flow in the cold room and a minimal air velocity of 0.25 m/s at air throw distance.

Sound pressure dB(A)

Sound pressure as given in the tables are sound pressure levels in dB(A) according to EN 13487 at 5 m distance in free field conditions. Values may deviate depending on situations at site. The table below gives calculated sound pressure corrections at various distances.

Distance m	Correction dB(A)
1	+ 14
2	+ 8
3	+ 4
4	+ 2
5	0
10	- 6
20	-12
50	-20

Fans 50 Hz / 1500 rpm

Fan motor W	Motor voltage* V	Electric capacity		Adj. values overload relays A			Cable inlet
		nom. kW	abs. kW***	0°C	-20°C	-40°C	
250	230/400/3	0.25	0.37	1.1	1.1	1.2	2 x M20 x 1.5
220	230/1	0.22	0.37	2.6	2.8	2.9	2 x M20 x 1.5
370	230/400/3	0.37	0.50	1.4	1.4	1.5	2 x M20 x 1.5
370	230/1**	0.37	0.50	3.7	4.0	-	2 x M20 x 1.5
550	230/400/3	0.55	0.70	1.7	1.8	2.0	2 x M20 x 1.5
550	230/1	0.55	0.70	5.5	6.0	6.2	2 x M20 x 1.5
750	230/400/3	0.75	0.70	2.1	2.3	2.4	2 x M20 x 1.5
1200	230/400/3	1.20	1.20	3.0	3.2	3.4	2 x M20 x 1.5
2400	230/400/3	2.40	2.80	6.8	7.3	7.8	2 x M20 x 1.5

* Motor windings 230 Volt.

** These 230/50/1 motors are suitable for temperatures down to -20 °C and are not provided with a thermal safety device in the windings.

*** Absorbed fan motor energy is measured in under laboratory conditions at ambient temperature 20 °C. These values may vary depending on local conditions.



Defrost Systems

Several forced defrost systems are available. Each defrost system is optimised for specific applications and ambient conditions.

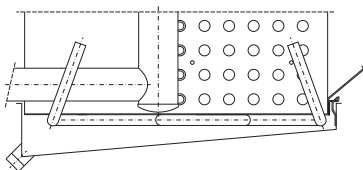
Recommended Defrost System						
Air in Temperature °C	+5	0	-5	-15	-25	-35
Hotgas defrost G 1		■	■			
G 2 G 2 + I			■	■	■	■
Electric Defrost E1 E1 + I 3		■	■	■	■	■
E2 E2 + I 3		■	■	■	■	■
E4		■	■			

Temperatures may vary depending on operating conditions.

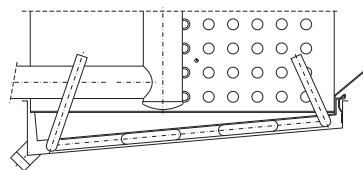
Hot Gas Defrost (G)

The driptray can be fitted with a defrost coil (G) to bring it rapidly up to temperature by means of hot gas. The following G-systems are available :

- G1** For modules 1, 2, 3 and 4 only :
Air on temperature down to - 5 °C.
Defrost coil under the coil block.
- G2** Air on temperature down to - 25 °C.
Defrost coil in the drip tray.
- G2 + I** Air on temperature down to - 35 °C.
G2, additionally equipped with an insulated double driptray.



Hot gas defrost G1
For modules 1, 2, 3 and 4 only.



Hot gas defrost G2

Electric Defrost (E)

Stainless steel heater elements placed in additional tubes between the evaporator tubes. The elements for the driptray are fitted to the bottom of the inner tray.

Both coil and driptray have the same elements. Standard voltage per element 230 V.

Connection to 230 V / 1 phase or 400 V / 3 phase, connected in star with Zero-Wire. Total defrost power is given for 400 V / 3 phase with Zero-Wire.

All elements can be withdrawn at the refrigerant connection side. The driptray elements can be taken out after removal of the outer tray.

The heater elements are pre-wired and are connected to one or more terminal boxes.

Depending on the ambient temperature and air humidity a number of E-executions are available.

- E1** Air on temperature down to - 25 °C.
Electric stainless steel defrost elements in the driptray. For use in combination with for example hot gas defrost in the coil block.
- E1 + I 3** Air on temperature down to - 35 °C.
E1, additionally equipped with an insulated double driptray. Recommended for general use in the low-temperature region.
- E2** Air on temperature down to - 25 °C.
Electric stainless steel defrost elements in the coil block and driptray. Recommended for general use.
- E2 + I 3** Air on temperature down to - 35 °C.
E2, additionally equipped with an insulated double driptray. Recommended for general use in the low-temperature region.
- E4** Air on temperature down to - 5 °C.
Electric stainless steel defrost elements in the coil block and driptray, low duty.
- E5** Electric defrost in diffuser for defrost damper (TYR-B only).

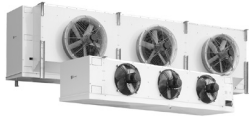
Hot Glycol Defrost (HW)

HW1 Hot glycol defrost in coil and driptray.
High temperatures.

HW2 Hot glycol defrost in coil and driptray.
Low temperatures.

Water Defrost (W)

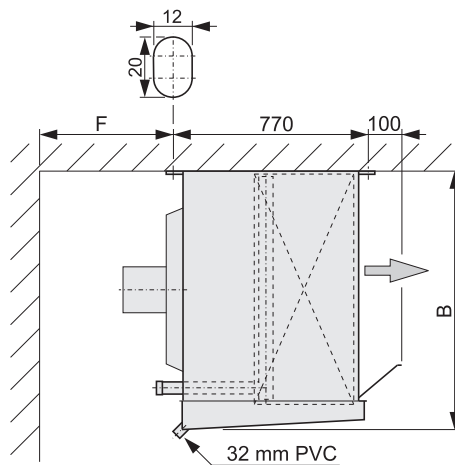
W Water defrost system for defrosting in the temperature range to -20 °C.



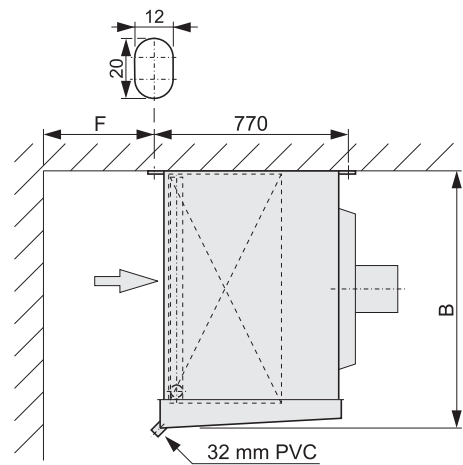
Dimensions

Modules 1-4

Cooler model TYR	Dimensions in mm							
	A	B	C1	C2	C3	D1	D2	F
11*	1320	580	800			660		450
12*	2120	580	1600			1060		450
13*	2920	580	2400			1460		450
14*	3720	580	1600	1600		1060	1600	450
15*	4520	580	2400	1600		1260	2000	450
16*	5320	580	2400	2400		1460	2400	450
17*	6120	580	1600	2400	1600	1660	2800	450
21*	1320	680	800			660		450
22*	2120	680	1600			1060		450
23*	2920	680	2400			1460		450
24*	3720	680	1600	1600		1060	1600	450
25*	4520	680	2400	1600		1260	2000	450
26*	5320	680	2400	2400		1460	2400	450
27*	6120	680	1600	2400	1600	1660	2800	450
31*	1320	880	800			660		500
32*	2120	880	1600			1060		500
33*	2920	880	2400			1460		500
34*	3720	880	1600	1600		1060	1600	500
35*	4520	880	2400	1600		1260	2000	500
36*	5320	880	2400	2400		1460	2400	500
41*	1520	880	1000			760		600
42*	2520	880	2000			1260		600
43*	3520	880	1000	2000		1010	1500	600
44*	4520	880	2000	2000		1260	2000	600
45*	5520	880	2000	1000	2000	1510	2500	600
46*	6520	880	2000	2000	2000	1760	3000	600

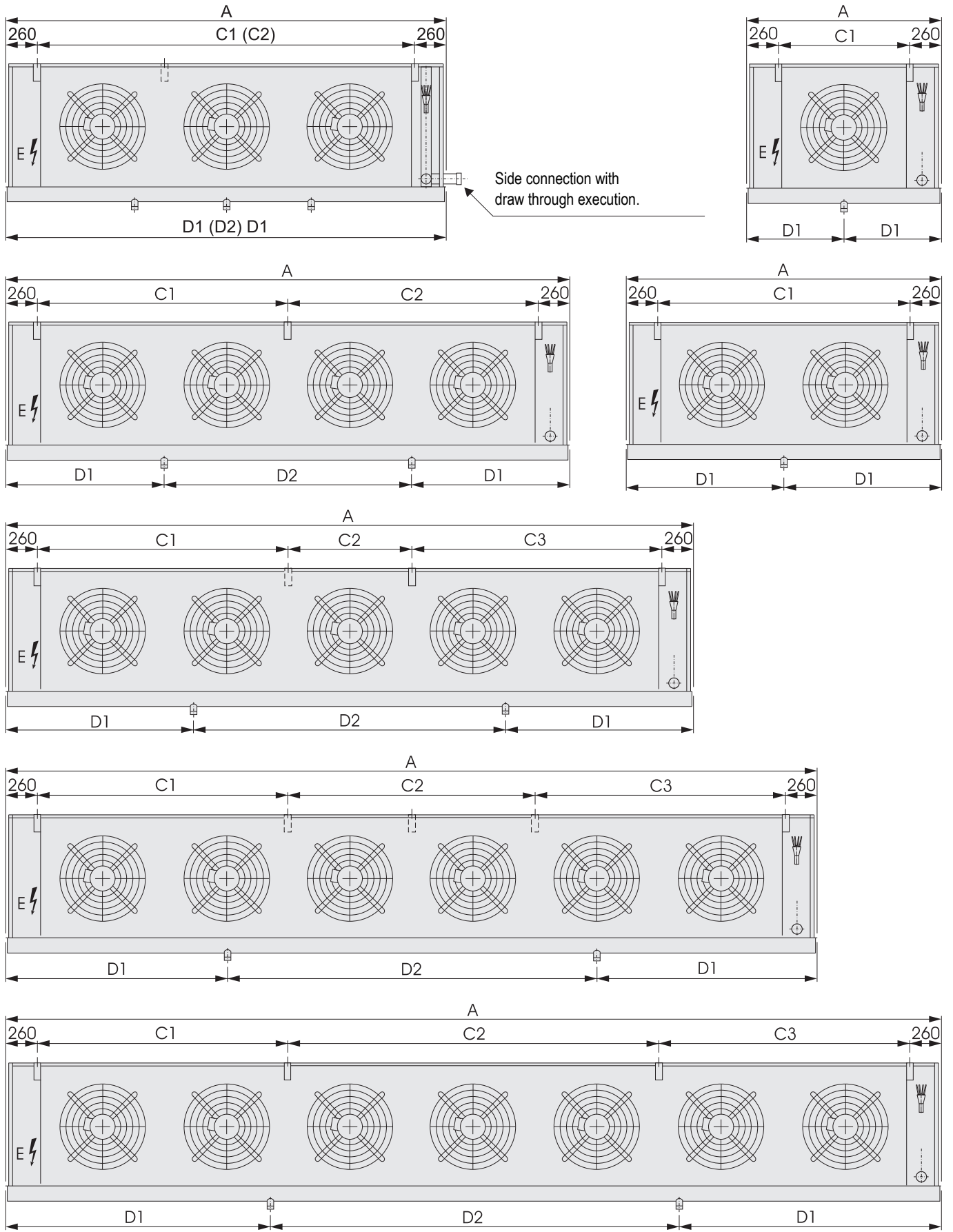


TYR-B module 1 - 4



TYR-Z module 1 - 4

Changes possible without prior notice



Changes possible without prior notice